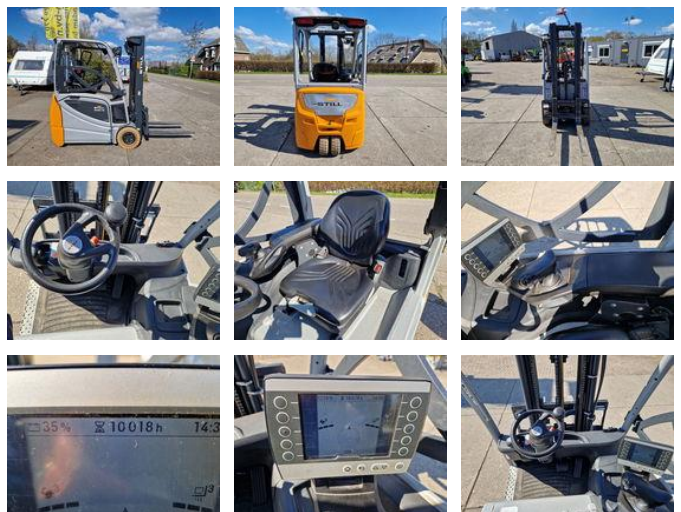


Still RX20-16 met nieuwe veiligheidskeuring

General features

Brand	Still
Subcategory	Forklift
Construction year	2019
Hourmeter reading	10018
Condition	Used
General condition	Very good
Fuel	Electric



Characteristics

Cabin	Open
Lifting capacity	1.600kg
Lifting height	4.765mm
Mast type	Triplex
Clearance height	2.160mm

Still RX20-16 met nieuwe veiligheidskeuring

Technical specifications

Engine output

13kw

Accessories